

HIA is One Tool in Health in All Policies

“...an approach to public decision making that moves beyond ad hoc or short-term health promotion programs but rather integrates health and health equity into newly established processes of governmental decision making.”

--World Health Organization 2013



HIAP Options (NAACHO)

STRATEGIES

for Implementing Health in All Policies



If Not HIA, Then What?

Incorporate health into decisions

- Code audits
- LEED-type check lists
- Modeling, decision support systems
- Develop & include health criteria for on-going decisions
- Include health in Cost-Benefit analyses, Return on Investment
- Fact sheets, issue briefs, memos, minority reports, testimony



If Not HIA, Then What?

Integrate research, evaluation and data systems

- Health analyses, health risk assessments, environmental assessments
- Community needs assessment, participatory research, action research



If Not HIA, Then What?

Cross-sector collaboration

- Public Health professionals as advisors or on consulting teams
- MOUs across organizations
- Shared project goals, priorities



If Not HIA, Then What?

Implement Accountability Structures

- Direct action
- Cross sector monitoring
- Public reporting on health and health equity
- Cross cutting spending reviews



What is the best fit for the decision?



Non HIA Example

U.S. Department of Transportation
Federal Highway Administration

About Programs Resources Briefing Room Contact Search FHWA

Office of Planning, Environment, & Realty (HEP)
Planning · Environment · Real Estate

HEP | Events | Guidance | Publications | Glossary | Awards | Cor

Health in Transportation



FHWA → Planning → Health In Transportation → Planning Framework

Health in Transportation Corridor Planning Framework

FHWA-HEP-16-014

Also available as [Adobe PDF](#) (700 KB)

PDF files can be viewed with the [Acrobat® Reader®](#)

[Continue to contents...](#)

Notice

The contents of this report reflect the views of the authors, who are responsible for the facts and accuracy of the data presented herein. The contents do not necessarily reflect the official policy of the U.S. Department of Transportation.

This report does not constitute a standard, specification, or regulation.

Contacts

For more information, please contact:

- Frederick Bowers
- Tameka Macon
- Victoria Martinez
- Aung Gye
- Jill Stark

Health in Transportation Working Group

Frequently Asked Questions

Planning Framework

Resources

NON HIA Example –

- Consultant/advisor on health analysis
- Embed health into existing process: City of Portland Environmental, Social, Economic and Energy (ESEE) analysis
- Similar to Environmental Impact Statement or Analysis



West Hayden Island Health Analysis

November 2012

Multnomah County Health Department | www.multco.us/health

in collaboration with:

Oregon Public Health Institute | www.orphi.org

Upstream Public Health | www.upstreampublichealth.org

City of Portland Bureau of Planning and Sustainability

www.portlandoregon.gov/bps



Childhood
Obesity
Prevention
RESEARCH PROGRAM



ARKANSAS
Farm to School



UNIVERSITY OF
FOR MEDICAL



MULTNOMAH
COUNTY
Health Department



Public Health

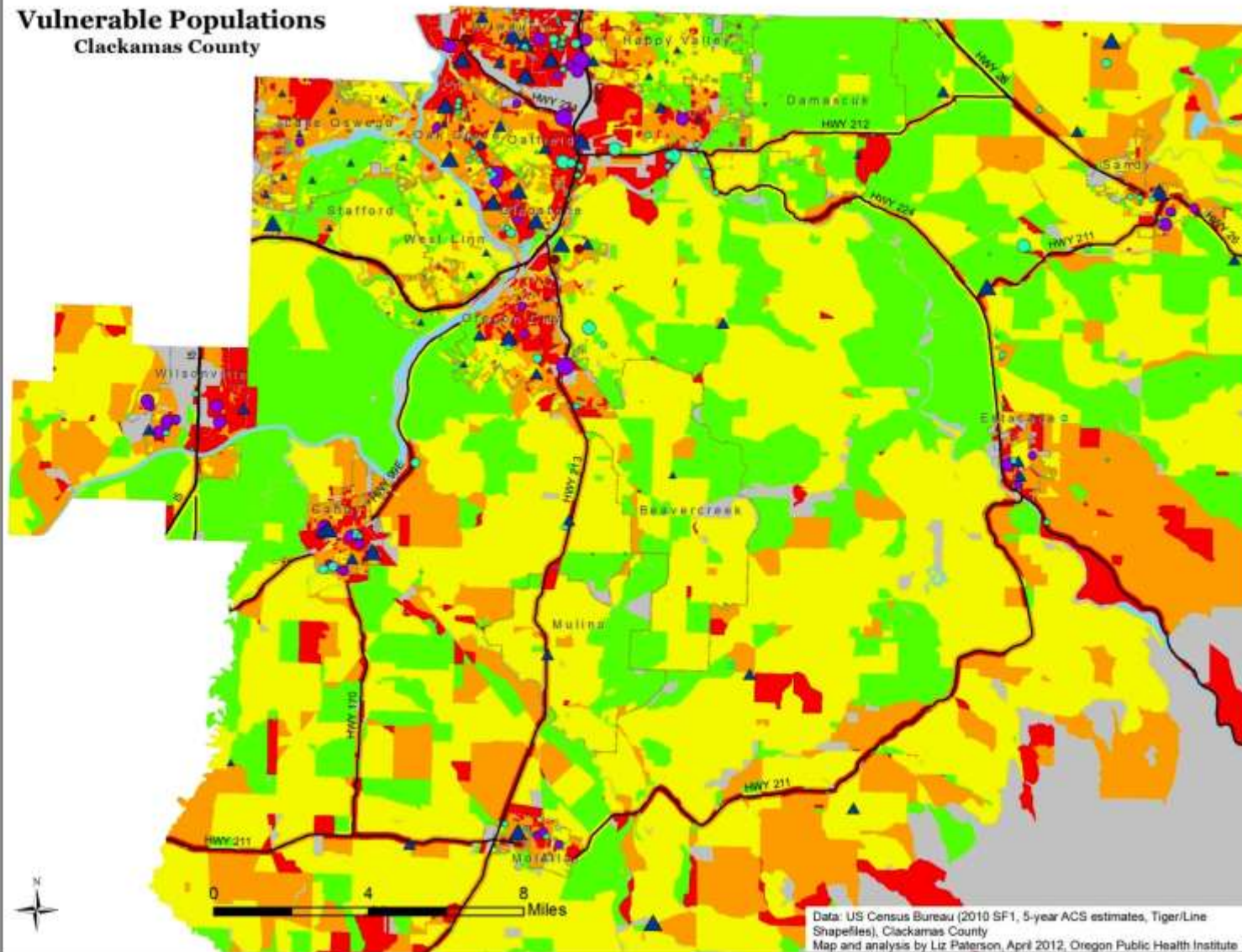
Non HIA Example: Clackamas County TSP



Legend

- Freeways, Highways
- City Limits
- Public Housing with 100+ Units
- Mobile Park Units**
- 2 - 40
- 41 - 100
- 101 - 200
- 201 - 500
- Schools**
- ▲ 3% - 25% Free/Reduced Lunch
- ▲ 26% - 50% Free/Reduced Lunch
- ▲ 51% - 80% Free/Reduced Lunch
- Affordable Housing Units**
- 2 - 20
- 21 - 50
- 51 - 150
- 151 - 300
- Vulnerable Population Index**
- No Population/No Data
- Least Vulnerable
- Most Vulnerable

Vulnerable Populations Clackamas County



Data: US Census Bureau (2010 SF1, 5-year ACS estimates, Tiger/Line Shapefiles), Clackamas County
Map and analysis by Liz Paterson, April 2012, Oregon Public Health Institute



Your NON HIA Examples

- What processes do you use now that could include health or health equity perspectives? Discuss with your colleague.
- Share with Group on Bike Rack list

Screening Outcomes Summary

- Understanding of the policy and how it might impact health
- Determination of whether the decision fits with an HIA
- Evaluation of resources needed based on timeline, data, and political context of the decision
- Consideration of different goals for the HIA
- Conclusion (and write up) of why you selected this decision for an HIA

HIA Values in this Stage (examples)

Equity

- Identify who might be impacted by this policy, especially the most vulnerable

Sustainable Development

- Identify the potential long-term, unintended health and health equity consequences of this proposal

Democracy

- Start HIA without a pre-determined outcome of conclusions you will make

Brain Break

- In your right hand put your thumb and index finger as if you were holding a cup of tea.
- In your left hand, put your hand in the shape of a squirt gun.
- Switch hands.
- Do this quickly back and forth.